



AMERICANA

CRAFTSMAN

EUROPEAN

# grayson

3,000 square feet



**RESOURCEFULL LIVING** embodies so many things.

It speaks of Savvy Homes' commitment to our planet, commitment to **SMART** and efficient building practices, and commitment to providing you with the opportunity to get the most out of your life.

Savvy Homes tirelessly researches new ways to serve you and our planet better via **DESIGN**, recycling abilities and product usage. Together we can help preserve the earth, minimize **ENERGY** consumption, conserve our **WATER** supply and ensure that you are living savvy.

# SAVVY HOMES

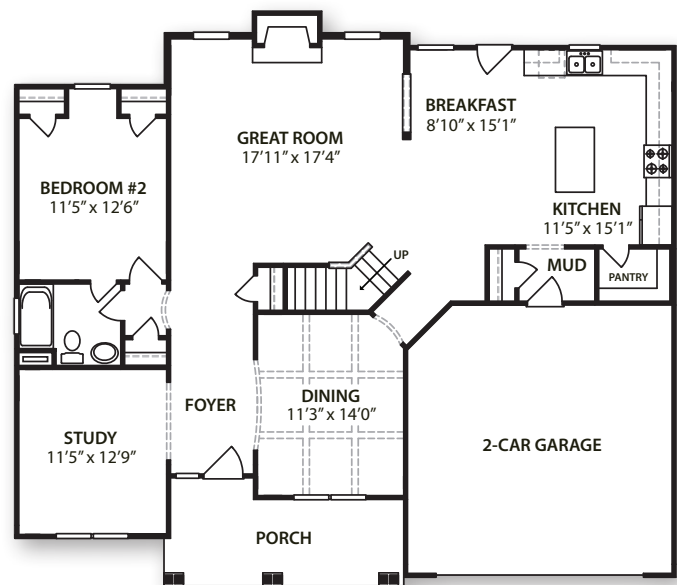
RESOURCEFULL LIVING™

This plan is in a conceptual stage of design and the elevations shown are solely representational. No warranties are made or implied by these drawings, as floor plans and room sizes may vary in final construction.

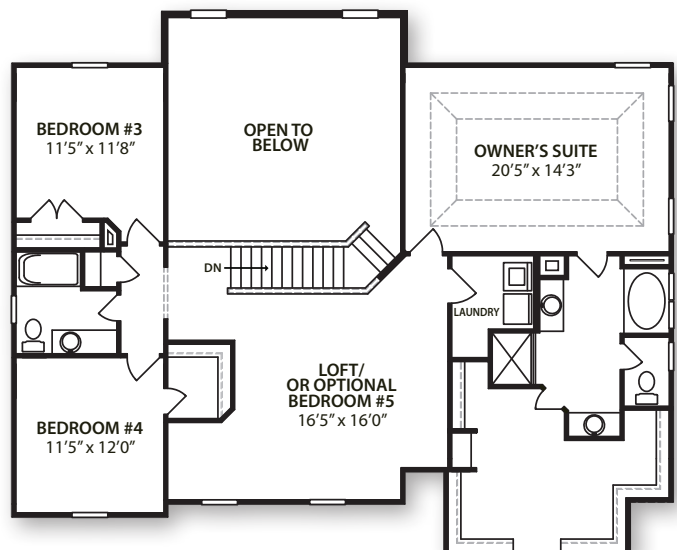
© SAVVY HOLDINGS 2009

[WWW.SAVVYHOMES.COM](http://WWW.SAVVYHOMES.COM)

Offered by:  
**RE/MAX** Home Connections  
 915 Savannah Drive  
 Jacksonville, NC 28546  
 Phone: 910.937.7700  
[www.OurMiracleHomes.com](http://www.OurMiracleHomes.com)



FIRST FLOOR



SECOND FLOOR