



AMERICANA



CRAFTSMAN



EUROPEAN

brookwood

2,312 square feet



RESOURCE FULL LIVING embodies so many things. It speaks of Savvy Homes' commitment to our planet, our commitment to **SMART** and efficient building practices, to get the most out of your life.

and commitment to providing you with the opportunity and our planet better via **DESIGN**, recycling abilities and product usage. Together we can help preserve the earth, minimize **ENERGY** consumption, conserve our **WATER** supply and ensure that you are living savvy.

SAVVY HOMES

RESOURCE FULL LIVING™

This plan is in a conceptual stage of design and the elevations shown are solely representational. No warranties are made or implied by these drawings, as floor plans and room sizes may vary in final construction.

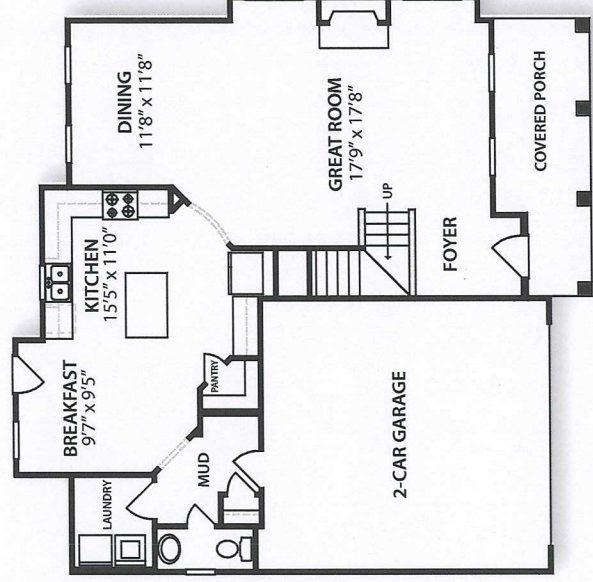
© SAVVY HOLDINGS 2010

WWW.SAVVYHOMES.COM

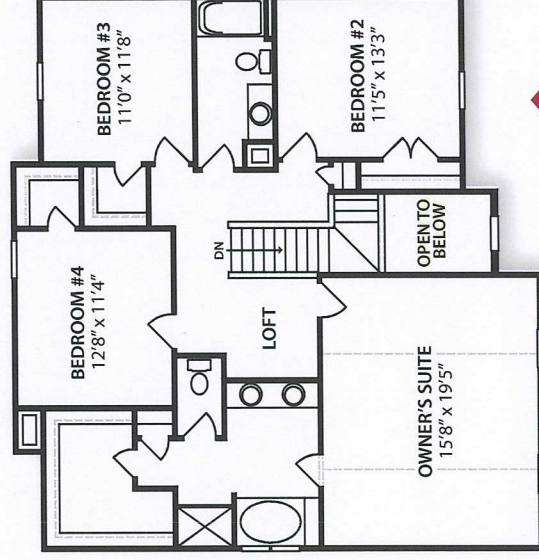
Offered by:



RE/MAX Home Connections
 915 Savannah Drive
 Jacksonville, NC 28546
 Phone: 910.937.7700
www.OurMiracleHomes.com



FIRST FLOOR



SECOND FLOOR