



AMERICANA



CRAFTSMAN



EUROPEAN

braxton

3,034 square feet

RESOURCEFULL LIVING™



RESOURCEFULL

embodies so many things.

It speaks of Savvy Homes' commitment to our planet, commitment to **SMART** and efficient building practices, to get the most out of your life.

and commitment to providing you with the opportunity Savvy Homes tirelessly researches new ways to serve you and our planet better via **DESIGN**, recycling abilities and product usage. Together we can help preserve the earth, minimize **ENERGY** consumption, conserve our supply and ensure that you are living savvy.

SAVVY HOMES

RESOURCEFULL LIVING

This plan is in a conceptual stage of design and the elevations shown are solely representational. No warranties are made or implied by these drawings, as floor plans and room sizes may vary in final construction.

© SAVVY HOLDINGS 2010

WWW.SAVVYHOMES.COM

Offered by:

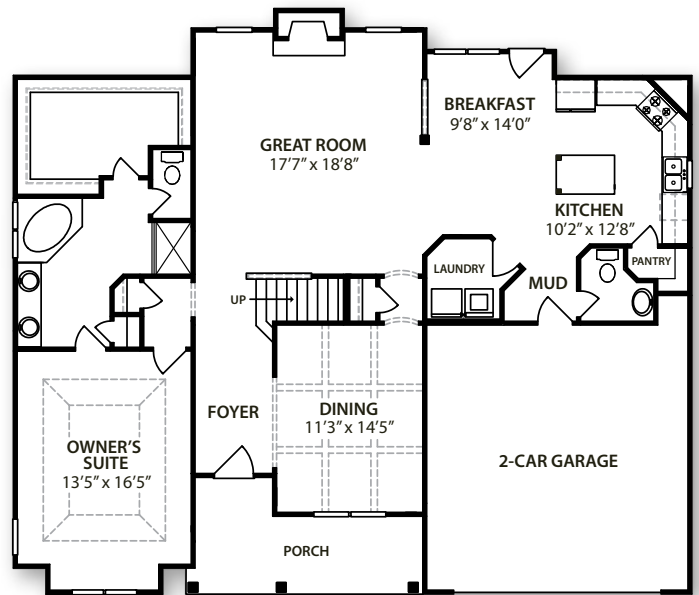
RE/MAX Home Connections

915 Savannah Drive

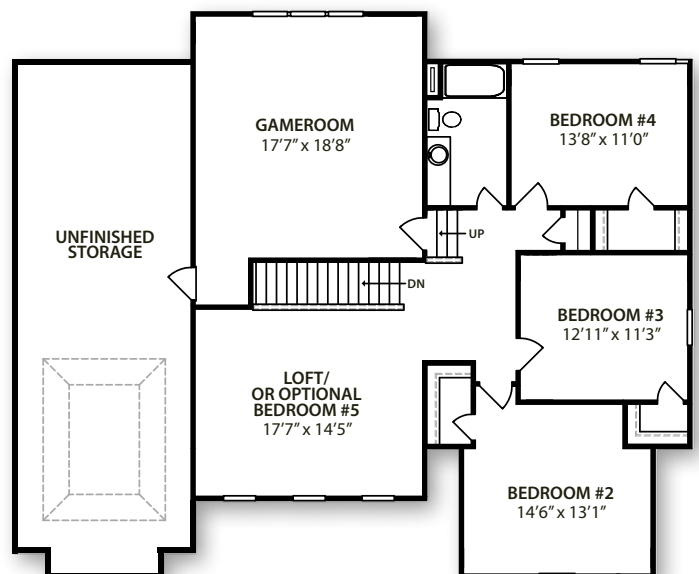
Jacksonville, NC 28546

Phone: 910.937.7700

www.OurMiracleHomes.com



FIRST FLOOR



SECOND FLOOR